



Atholl Crescent Townhouse - City Centre - West End

Sleeps 8

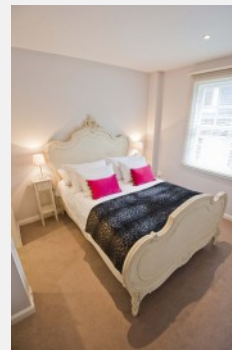
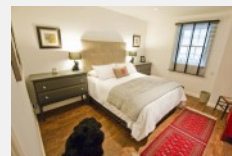
Price from £200

[Check Availability & Book Property »](#)

Fantastic Luxury 4 bedroom, 4 bathroom townhouse quietly hidden away in the heart of the city. Plus Garage.

Property Features

- 4 Bathrooms
- Stunning décor
- Cot
- Perfect Location
- En-Suite Bathroom
- Shower-room
- Dining Area / Table
- WiFi
- Central Heating
- Garage
- Utility Room
- Lounge



Room Schedule

Local Area

Atholl Crescent Lane is perfectly located for exploring the City of Edinburgh... It is quietly tucked away from all the hustle and bustle of the city.. 3 minute walk to Princes Street.

Townhouse

This beautifully decorated luxury townhouse has everything you need and more for the perfect City-break.

Arranged over 3 floors this modern townhouse has 3 double bedroom (one on the ground floor) and 1 single / twin room.

Laundry area in garage with Washing Machine and Tumble Dryer.

Lounge

The lounge is located on the first floor quietly to the rear... open plan with leaner couches and large dining table.

Wifi, CD Player, TV with Freeview and DVD player with selection of DVD's

Bedrooms

There are 4 bedrooms in total allowing the apartment to sleep up to 8 Adults.

Bathrooms

There are 4 bathrooms in total.. one on the ground floor, a main bathroom on the first floor plus a further 2 en-suite bathrooms on the 3rd floor.

Kitchen

Luxury kitchen with granite worktops.

Induction Hob, Steam oven, Microwave, Fan Oven, Dishwasher, American Fridge/Freezer with ice maker, Krups Nespresso coffee machine.

How to Book

To get a quote / book this apartment simply click the enquire button below and complete the form. The owner will reply directly to you with availability and a price for your stay... Paying the booking fee online will confirm your booking with the Owner / Landlord however an additional security deposit may be required prior to or upon arrival.

[Google+](#)

[Check Availability & Book Property »](#)